



Model: YO811 Version: 2.8

Date: 16/01/2017

What's in the Box

- Yoswit Smart Light Switch (YO811) x 1
- Screw x 2
- LED Power Stabilizer x 1
- User Manual x 1
- Warranty Card x 1



If any of the above items is missing, please contact your reseller.

Preface

Lincogn reserves the right to revise this publication and to make changes in the content hereof without obligation to notify any person or organization of such revisions or changes.

Caution

Please read all of the safety and operating instructions before using your device:

- Air circuit breaker must be installed.
- Only trained and skilled electricians should carry out the installation.
- Please follow your local specific regulations of the installation and operation of electric devices.
- Do not open the device or attempt to repair or service it.
- Use the device in a dry location, and avoid placing it in a humid environment.
- Do not submerge the device in liquid or attempt to clean it with liquids or solvents. To clean the device, disconnect from the power outlet and use a dry towel.
- This device should only be used indoors.

Working with Smart Devices

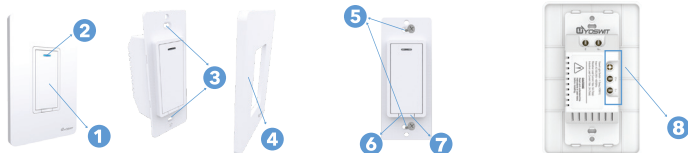
This product can work alone without relying on routers and phones. In using a smartphone with our app installed, you can control devices in an instant remotely. It also changes your power schedules, ensuring that you can have a complete control of devices with smart automation wherever you are. For detailed and updated app functions, please refer to the user guide in the app.

Download the App

- Download our app from the **a. App Store (iPhone, iPad, or iPod touch)**; **b. Google Play (Android)** or **c. download the app in - apk.yoswit.com**
- Once the app is installed, launch the app and follow the on-screen instructions.


Introduction

The Yoswit Smart Light Switch is a multi-purpose, compact, and easy-to-use device that allows you to control your home's electronic devices through your smart devices.



1.	Power Button	Press the button to turn the connected device on or off.
2.	LED Indicator	By default, LED indicator lights up if the device is off. You can set with our app and change the on/off status of LED indicator to match the on/off status of your device accordingly.
3.	Frame Notches	To remove wall plate, insert a small, flat screwdriver in notches on wall plate and twist gently to pry from frame.
4.	Wall Plate	Decoration frame for the switch.
5.	Wall Mount	Mount the switch to the back box.
6.	Restart Button	Reserved function for factory inspection only.
7.	Reset Button	- Press and hold the button for 5s to reset the password - Press and hold the button for 20s to reset the device to factory default setup
8.	Wiring Terminals	Connect the input and output wires. For details, please refer to the wiring diagram in Installation section.

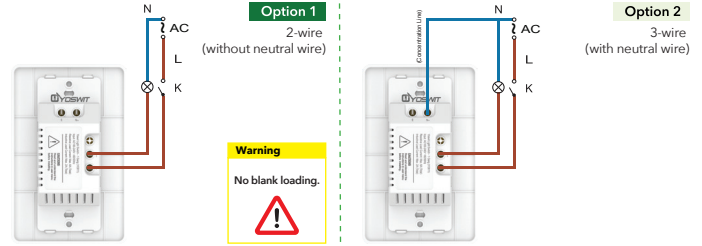
Installation
Warning

To prevent severe shock or electrocution, always disconnect the power at the service panel before installation. Only licensed electricians should carry out the installation.



- Remove the old switch and disconnect the wires, please make sure that there is about 5mm of bare wire exposing.
- Insert a small, flat screwdriver in notches on wall plate and twist gently to pry from frame to remove wall plate.

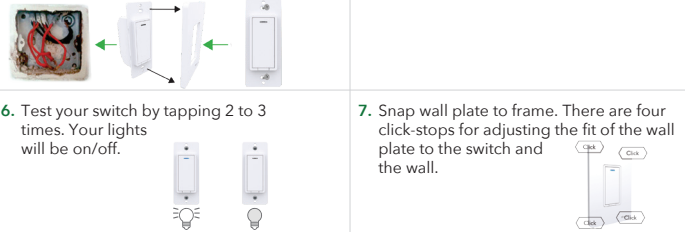
- Connect the wires to the switch case. Make sure that the wires are secure.


Warning

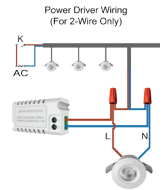
To reduce risk of electrical shock, unit shall be properly grounded in accordance with local regulations or codes. Failure to connect the ground wire will result in an unsafe installation that could lead to personal injury.



- Fasten the switch on wall by placing the proper wall mount components.
- Turn on the circuit breaker and connect to the power.


Installation - LED Power Stabilizer (Optional)

After 2-wire (without neutral wire) wiring, in case you encountered conditions of circuit instability, lightings gleaming or no light, you may (i) adopt 3-wire (with neutral wire) wiring method, or (ii) place the power driver at two ends of any one lamp as the diagram below:


Technical Specifications

80mm	42mm	6.5mm	19mm
125mm	49mm	70mm	26mm
32.5mm			
-10 to 40°C			
0-90% relative humidity			
Operation Condition			
AC100-240V	Incandescent lamp	Fluorescent lamps with conventional ballast	LED (CC)
50/60Hz Auto Detected at Power-Up	Halogen lamps	CFL	LED (RC)
Standby Power <0.1 Watt	Fluorescent lamps with conventional ballast	LED (CC)	LED (RC)
Max	6A	3A	2A
Min	6A	N/A	2A
			3 watts (each bulb) *
			N/A
			2A
			6A
			N/A

* For 2-wire (without neutral wire) installation only. Please wire the LED power stabilizer if it is required to work with LED bulbs in 3 watts below when you encountered conditions of circuit instability, lightings gleaming or no light.

General

Product Name	Yoswit Smart Light Switch
Model	YO811
Gang Type	1 gang
Socket Type	Socket 120
EAN / UPC	EAN: 0712155479425; UPC: 712155479425
Revision	V2
Compliance	ETL, FCC, RoHS
Manufacturer	Designed by Yoswit in Hong Kong. Assembled in China

Mechanical

Surface Materials	V0 flame-resistant PC +ABS
Storage Conditions	-20°C to 60°C
Operating Environment	Indoors
Ingress Protection (IP)	20

Bluetooth

Product Compatibility	Bluetooth Smart Ready products
Frequency	2.4GHz
Radio Transmission Power	0-5 dBm
Bluetooth Range	Open area: >50m; indoor: 10-20m
Bluetooth Version	Bluetooth 4.2