



Model: YO1007cu Version: 2.1

Date: 18/01/2017

**What's in the Package**

- |   |                   |
|---|-------------------|
| Yoswit Curtain Motor (YO1007cu) x 1   | End hook x 1      |
| Curtain Track<br>(The track, which is customized upon your request, is delivered separately.) | User Menu x 1     |
| Curtain Brackets<br>(2 pcs. for every 1m track, 1 pc. for another 1m afterwards)              | Warranty Card x 1 |
| Screws<br>(4 pcs. for each bracket)   |                   |

If any of the above items is missing, please contact your reseller.

**Preface**

Lincogn reserves the right to revise this publication and to make changes in the content hereof without obligation to notify any person or organization of such revisions or changes.

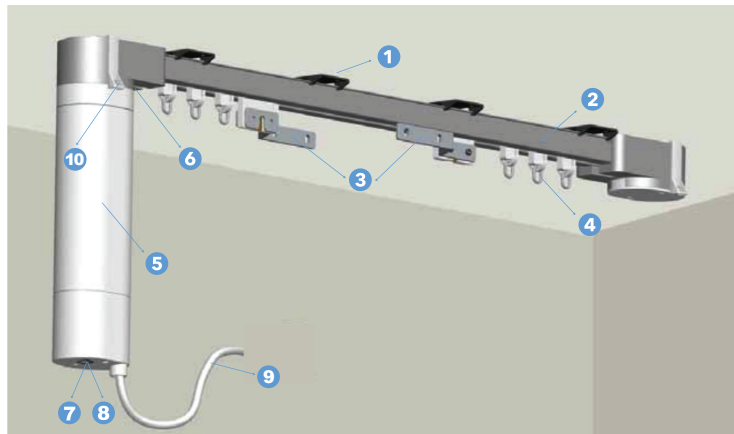
**Caution**

Please read all of the safety and operating instructions before using your device:

- Air circuit breaker must be installed.
- Only trained and skilled electricians should carry out the wiring installation.
- Please follow the country-specific regulations of the installation and operation of electric devices.
- Do not open the device or attempt to repair or service it.
- Use the device in a dry location, and avoid placing it in a humid environment.
- Do not submerge the device in liquid or attempt to clean it with liquids or solvents. To clean the device, disconnect from the power outlet and use a dry towel.
- This device should only be used indoors.

**Introduction**

The Yoswit Curtain Motor is a compact and easy-to-use device that works with curtain switches to motorize curtains and make the whole set of curtains smart.



1.	<b>Curtain Bracket</b>	The component for mounting the curtain track to the ceiling.
2.	<b>Curtain Track</b>	The track for you to attach your curtains.
3.	<b>Master Carrier</b>	The leading edge for curtains that forces curtains to overlap when shutting.
4.	<b>Curtain Wheel</b>	Assembled on the curtain track. You can hang your curtain on both sides of the curtain wheels.
5.	<b>Curtain Motor</b>	Generate movement to the curtain track.
6.	<b>Motor Lock</b>	Press the motor lock (usually black) to remove the motor from the curtain track.
7.	<b>LED Indicator</b>	LED indicator lights up if the curtain motor is functioning.
8.	<b>Cable Port</b>	Reserved for factory use.
9.	<b>Motor Cable</b>	You can connect the curtain cable with your switch to complete the circuit.
10.	<b>End Hook</b>	Attach the curtains here to cover the motor.

**Installation**

1. Search for a proper position to install the curtain track.

**Reminder**

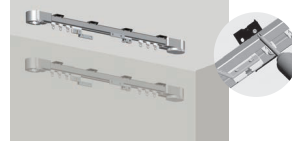
Always install the curtain track horizontally on a flat surface.

2. Check the position of curtain brackets. The most appropriate distance for brackets is 2 pieces for every 1m track. Afterwards, add 1 piece for another 1m.

**Reminder**

Length of curtain track should exceed the width of your window by 20-30 cm on each side, while distance between curtain brackets should not be greater than 50 cm.

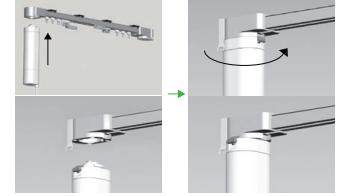
3. Assemble the curtain brackets to the curtain track with screws. Mount the curtain track with curtain brackets to a flat ceiling.


**Warning**

The bearing capacity of the sum of screws must be at least 300kg.



4. Assemble the curtain motor by inserting it to the curtain track. Turn the curtain motor anti-clockwise. The motor will be locked in a fixed position automatically.



5. Disconnect the power supply of your switch. If you are installing Yoswit curtain switch, please refer to the user manual of Yoswit curtain/roller switch.

**Warning**

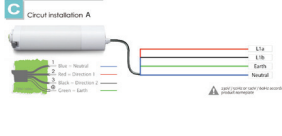
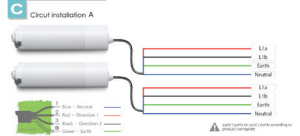
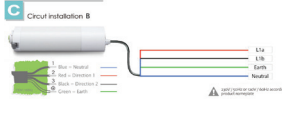
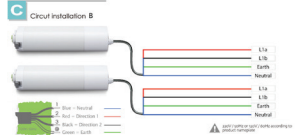
To prevent severe shock or electrocution, always disconnect the power at the service panel before installation. Only licensed electricians should carry out the installation.



6. Connect the live, neutral and ground wires of motor to your switch.

**Warning**

To reduce risk of electrical shock, unit shall be properly grounded in accordance with local regulations or codes. Failure to connect the ground wire will result in an unsafe installation that could lead to personal injury.


**Circuit Installation A**

**Circuit Installation A (2-layer circuit installation)**

**Circuit Installation B**

**Circuit Installation B (2-layer circuit installation)**


7. Turn on the circuit breaker and connect to the power.

8. Test the motorized curtain by tapping your switch for several times.

**General**

Product Name	Yoswit Curtain Motor
Model	YO1007cu
EAN / UPC	EAN: 0712155479562; UPC: 712155479562
Manufacturer	Designed by Yoswit in Hong Kong. Assembled in China.

**Motor Technical Data**

Safety Curtain Weight (kg)	75 (230V) / 75 (120V)
Rated Power (w)	121 (230V) / 107 (120V)
Open/Close Speed (cm/sec)	20 (230V) / 24 (120V)
Rated Current (A)	0.27 (230V) / 24 (120V)
Running Time (min)	4 (230V) / 4 (120V)
Degree of Protection (IP)	20 (230V) / 20 (120V)
Maximum Turns (Turns)	No limit
Track Length (m)	≤12 (230V) / ≤12 (120V)
Weight (kg)	1.10 (230V) / 1.10 (120V)
Product Certificate	TÜV, CCC, CE, RoHS (230V) / RoHS (120V)