



Model: YO515uk Version: 2.1

Date: 20/02/2017

What's in the Box

- Yoswit Smart Outlet (YO515uk) x 1
- Screw x 2
- User Manual x 1
- Warranty Card x 1



If any of the above items is missing, please contact your reseller.

Preface

Lincogn reserves the right to revise this publication and to make changes in the content hereof without obligation to notify any person or organization of such revisions or changes.

Caution

Please read all of the safety and operating instructions before using your device:

1. Air circuit breaker must be installed.
2. Only trained and skilled electricians should carry out the installation.
3. Please follow your local specific regulations of the installation and operation of electric devices.
4. Do not open the device or attempt to repair or service it.
5. Use the device in a dry location, and avoid placing it in a humid environment.
6. Do not submerge the device in liquid or attempt to clean it with liquids or solvents. To clean the device, disconnect from the power outlet and use a dry towel.
7. This device should only be used indoors.

Working with Smart Devices

This product can work alone without relying on routers and phones. In using a smartphone with our app installed, you can control devices in an instant remotely. It also changes your power schedules, ensuring that you can have a complete control of devices with smart automation wherever you are. For detailed and updated app functions, please refer to the user guide in the app.

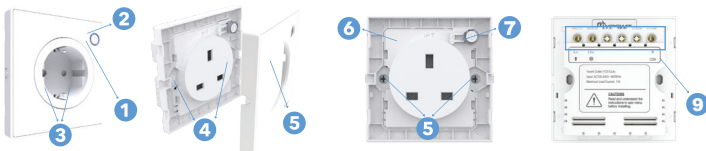
Download the App

1. Download our app from the a. **App Store** (iPhone, iPad, or iPod touch); b. **Google Play** (Android) or c. **download the app in - apk.yoswit.com**
2. Once the app is installed, launch the app and follow the on-screen instructions.



Introduction

The Yoswit Smart Outlet is a compact and easy-to-use device that allows you to control your electronic devices through your smart devices without any installation of extra smart switches or devices.



1.	Power Button	Press the button to turn the connected device on or off.
2.	LED Indicator	By default, LED indicator lights up if the device is on. You can set with our app and change the on/off status of LED indicator to match the on/off status of your device accordingly.
3.	Outlet Contact	Insert the plug of your devices here.
4.	Frame Notches	To remove wall plate, insert a small, flat screwdriver in notches on wall plate and twist gently to pry from frame.
5.	Wall Plate	Decoration frame for the switch.
6.	Wall Mount	Mount the switch to the back box.
7.	Restart Button	Reserved function for factory inspection only.
8.	Reset Button	- Press and hold the button for 5s to reset the password - Press and hold the button for 20s to reset the device to factory default setup
9.	Wiring Terminals	Connect the input and output wires. For details, please refer to the wiring diagram in Installation section.

Installation

Warning

To prevent severe shock or electrocution, always disconnect the power at the service panel before installation. Only licensed electricians should carry out the installation.



1. Remove the old outlet and disconnect the wires, please make sure that there is about 5mm of bare wire exposing.



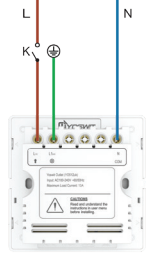
2. Insert a small, flat screwdriver in notches on wall plate and twist gently to pry from frame to remove wall plate.



3. Connect the wires to the switch case. Make sure that the wires are secure.

Warning

To reduce risk of electrical shock, unit shall be properly grounded in accordance with local regulations or codes. Failure to connect the ground wire will result in an unsafe installation that could lead to personal injury.

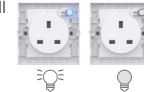


4. Fasten the outlet on wall by placing the proper wall mount components.



5. Turn on the circuit breaker and connect to the power.

6. Test the LED indicator by tapping the power button of the outlet 2 to 3 times. The LED will be on/off.



7. Plug in your devices.

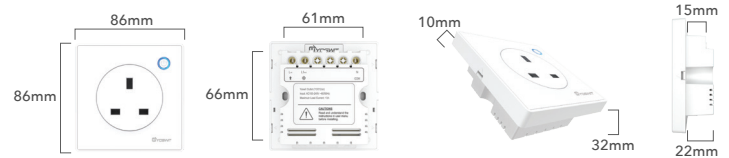
Warning

To reduce risk of electrical shock, please make sure the devices and the outlet are off.



8. Press the power button of the outlet and your devices on.

Technical Specifications



General

Product Name	Yoswit Smart Outlet
Model	YO515uk
Outlet Version	UK
Socket Type	Socket 86
EAN / UPC	EAN: 0712155479937; UPC: 712155479937
Revision	V1
Compliance	CE, FCC, RoHS
Manufacturer	Designed by Yoswit in Hong Kong, Assembled in China.

Electrical

Input Voltage	AC100-240V
Frequency	50/60Hz Auto Detected at Power-Up
Standby Power	<0.1 watt
Operating Temperature	-10°C to 40°C
Resistive Load Current	13A
Inductive Load Current	5A

Mechanical

Surface Materials	V0 flame-resistant PC +ABS
Storage Conditions	-20°C to 60°C
Operating Environment	Indoors
Ingress Protection (IP)	20

Bluetooth

Product Compatibility	Bluetooth Smart Ready products
Frequency	2.4GHz
Radio Transmission Power	0~5 dBm
Bluetooth Range	Open area: >50m; indoor: 10-20m
Bluetooth Version	Bluetooth 4.2